

POLYTECH

PRODUCT
CATALOGUE

N° 28
JULY 2024

A circular logo with a gradient border from yellow to red, containing the text "Made in Germany".

Made in
Germany

POLYTECH

POLYTECH Health & Aesthetics combines pioneering innovation with precision craftsmanship to achieve higher standards in breast aesthetics, reconstruction and body contouring.

With over 35 years at the forefront of our industry, and millions of implants produced, we empower patients and surgeons worldwide to achieve their aspirations with confidence.

POLYTECH offers the most comprehensive range of products in the market. We invest in innovation, as evidenced through B-Lite®, the world's first and only lightweight breast implant – delivering faster recovery time and greater comfort to patients.¹

We believe in solutions that offer predictable, safe and stable long-term results, such as our Microthane® micropolyurethane breast implant or our MESMO® breast implant, with a 97% patient satisfaction rate², offering a balance between smooth and textured surface to deliver a natural look and feel over time. In addition to our full range of implants, we also offer comprehensive body contouring solutions like the LipoGrafter® system to allow surgeons to refine surgical outcomes.

Our consistent investment in surgeon education through the POLYTECHconnect Academy, an extensive programme of events and a strong commitment to nurturing bright talents reflects our dedication to advancing the field through teaching and training. With the largest social media platform in breast aesthetics, we support patient education and their journey to enhance their well-being. Our strong focus on quality is evident as POLYTECH was the first breast implant manufacturer to receive the CE mark, and to achieve Class III certification. Our 'Quality Made in Germany' products are supported by one of the largest patient databases of its kind, our IMPLANTS OF EXCELLENCE programme, showcasing high satisfaction rates with POLYTECH implants.

At POLYTECH, our dedicated team embodies passion and extensive experience. We provide agile, diverse and proven solutions that effectively respond to market demands in over 80 countries. Discover the synergy of innovation, education and passion with POLYTECH.

“ Dear Colleagues and Customers,

as the CEO of
POLYTECH Health & Aesthetics,
I am delighted to present our new
product catalogue. It is designed
to help you select the best
products for your patients.

Our extensive portfolio aims to
meet your individual needs with
precision and care.

We take pride in our innovative solutions
and continuous commitment.
This dedication has positioned us as a
global leader in breast aesthetics and
body contouring technologies.

Your feedback is invaluable as we
continually strive to enhance our
products and services.

We welcome your suggestions to better
serve you and your patients.

Thank you for your ongoing
trust and partnership. ”

Prof. Dr. med. Karsten Hemmrich
CEO POLYTECH

Pages

06 – 14	Breast implant selection 3 Simple Choices POLYTECHselect Gel filling – Surface – Shape Nomenclature guide Quality assurance at POLYTECH Warranty programme
15 – 26	Breast implants – B-Lite® B-Lite® MESMO® Mème® RR B-Lite® MESMO® Replicon® AR B-Lite® MESMO® Opticon® AS B-Lite® Microthane® Mème® RR B-Lite® Microthane® Replicon® AR B-Lite® Microthane® Opticon® AS
27 – 49	Breast implants – SublimeLine SublimeLine MESMO® Mème® SublimeLine MESMO® Replicon® SublimeLine MESMO® Opticon®Plus SublimeLine MESMO® Opticon® SublimeLine POLYtxt® Replicon® SublimeLine POLYtxt® Opticon® SublimeLine Microthane® Mème® SublimeLine Microthane® Replicon® SublimeLine Microthane® Opticon®Plus SublimeLine Microthane® Opticon® SublimeLine POLYsmooth™ Mème®
50 – 51	Breast implants – Diagon\Gel® Diagon\Gel® 4Two AR Microthane® Diagon\Gel® 4Two AO Microthane®
52 – 56	Expanders Breast expanders Tissue expanders
57 – 61	Body contouring Gluteal implants Testicular implants Pectoral implants Calf implants
62 – 64	Other products LipoGrafter® POLYsleeve™ Custom-made implants and expanders



3 SIMPLE CHOICES

1

Gel filling

- **B-Lite®** – Lightweight gel
- **SublimeLine** – Soft cohesive silicone gel

Our innovative and unique lightweight gel in our B-Lite® implants can provide less strain on the surrounding tissue.³

The SublimeLine implants with cohesive silicone gel offer a 'memory effect' which means that after moderate compression the implant returns to its original shape.

2

Surface

- **MESMO®** – Fine microtextured
- **POLYtxt®** – Microtextured
- **Microthane®** – Micropolyurethane
- **POLYsmooth™** – Smooth

With our four surfaces we offer you the choice of different characteristics to tailor the implant to the patient treatment plan. In terms of stability, adherence, risk of capsular contracture and other needs.

3

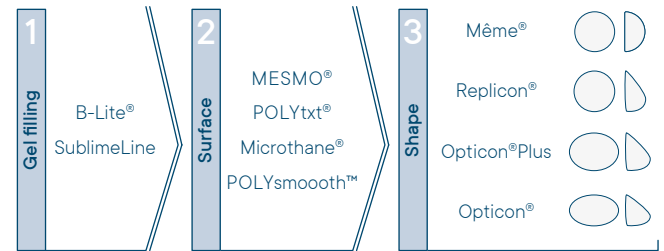
Shape

- **Même®** – Round base, central profile
- **Replicon®** – Round base, anatomical profile
- **Opticon®Plus** – Short plus base, anatomical profile
- **Opticon®** – Short base, anatomical profile

With our four core implant shapes you have the choice between one round or three different anatomical shaped implants to accommodate your patient's needs and expectations for the final surgical outcome.

With **3 simple choices**, you can quickly choose an implant for your patient. Select the right implant for the individual needs of your patient very easily.

POLYTECH's breast implant portfolio offers the widest product range on the market:



Please refer to specific product pages for exact choices.

POLYTECHselect

POLYTECHselect utilises **3 simple choices** to guide you through your selection process.

Quickly tailor the width, height and projection to the needs of your patient for breast implants and expanders.

Two-stage breast reconstruction

Easily identify the final breast implant and corresponding breast expander.



- ▶ 24/7 online
- ▶ Implant tailoring
- ▶ Simple selection
- ▶ Match to unique patients needs

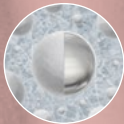
1

Gel filling

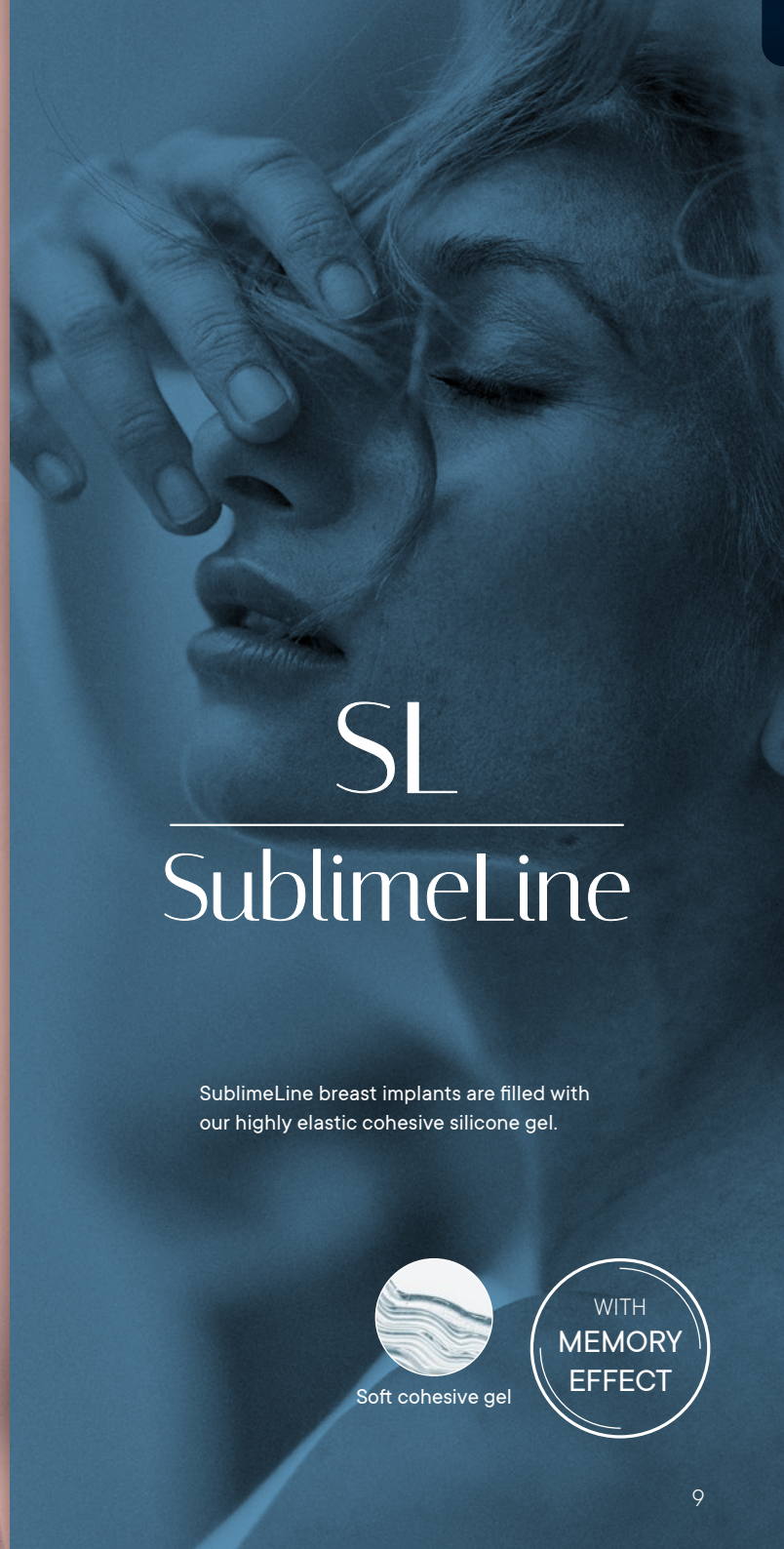
B-LITE®

B-Lite® is the world's first and only lightweight breast implant. Its unique filling gel is specifically designed to reduce the unwanted long-term impact of implant weight and pressure on the breast tissue.

UP TO
30%
LIGHTER



Lightweight gel



SL
SublimeLine

SublimeLine breast implants are filled with our highly elastic cohesive silicone gel.

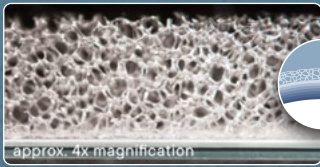


Soft cohesive gel

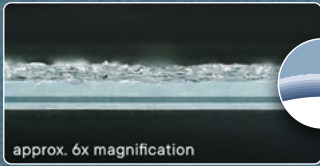
WITH
MEMORY
EFFECT

2

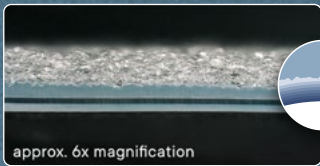
Surface



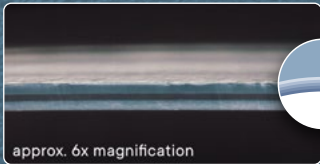
Microthane®
Micropolyurethane



MESMO®
Fine microtextured



POLYtxt®
Microtextured



POLYsmooth™
Smooth

3

Shape

Round



Même®

The traditional round breast implant with a circular base and uniformly semi-spherical profile.

Anatomical



Replicon®

The classic among the anatomical shapes, with a circular base and a tear-drop profile with more volume in the lower half.



Opticon®Plus

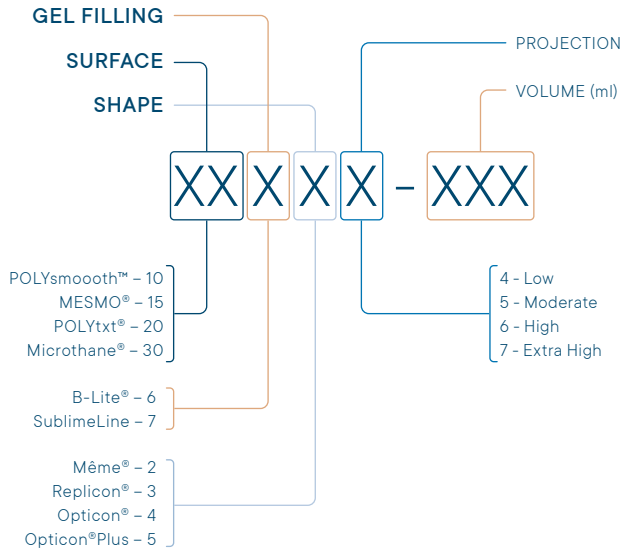
The latest anatomical implants, featuring the short plus oval base – with a plus in height and optimised filling volume.



Opticon®

These implants are a variant of the anatomical shape. They have a shorter base and are particularly suitable for women with more subcutaneous fat tissue in the neckline.

3 SIMPLE CHOICES



E.g.: MESMO® SublimeLine Mème® High Projection - 360 ml.



Note: The nomenclature applies to POLYTECH SublimeLine and B-Lite® breast implants. Diagon\Gel® 4Two is a product range of its own.



Our products are commercialised in more than **80 countries** worldwide.



Quality you can feel

- ➔ Development and manufacturing in Dieburg, Germany.
- ➔ Focus on continuous innovation and improvement.
- ➔ CE and ISO 13485 certifications.
- ➔ Certified in several countries worldwide.
- ➔ Rigorous and documented quality control processes.
- ➔ Meeting high safety standards.
- ➔ Long running post-market surveillance programme.



Free Lifetime Replacement Implants

Programme benefits*

Lifetime warranty for:

Microthane®

- Material related shell rupture
- Implant rotation
- Capsular contracture Baker grade III or IV
- Including contralateral implant upon prescription

Lifetime warranty for:

MESMO®, POLYtxt®, POLYsmoooth™

- Material related shell rupture
- Including contralateral implant upon prescription

Up to 10 years post-op warranty for:

MESMO®, POLYtxt®, POLYsmoooth™

- Capsular contracture Baker grade III or IV
- Including contralateral implant upon prescription

IMPLANTS OF EXCELLENCE is our free warranty programme for POLYTECH breast and gluteal implants. It provides coverage in all countries where POLYTECH is officially distributed.

Patients can register within the first 6 months after the day of surgery. Registration is free.



Visit [MyPOLYTECH](#) for patient consultation material

* All detailed information on T&C are available on:
www.polytech-health-aesthetics.com/en/warranty





Moderate Projection

Width	Height	Proj.	Curve	LVC	Vol. (ml)	Order N°
93	93	32	59	59	130	15625-130LW25
98	98	34	62	62	150	15625-150LW25
103	103	35	65	65	175	15625-175LW25
108	108	36	68	68	200	15625-200LW25
113	113	37	71	71	230	15625-230LW25
118	118	39	74	74	260	15625-260LW25
123	123	40	77	77	290	15625-290LW25
128	128	41	80	80	325	15625-325LW25
133	133	42	83	83	365	15625-365LW25
138	138	44	86	86	405	15625-405LW25
143	143	45	89	89	450	15625-450LW25
148	148	46	92	92	495	15625-495LW25
153	153	47	95	95	545	15625-545LW25
158	158	49	98	98	600	15625-600LW25

High Projection

Width	Height	Proj.	Curve	LVC	Vol. (ml)	Order N°
93	93	39	64	64	165	15626-165LW25
98	98	41	67	67	190	15626-190LW25
103	103	43	71	71	215	15626-215LW25
108	108	44	74	74	250	15626-250LW25
113	113	46	77	77	285	15626-285LW25
118	118	48	80	80	325	15626-325LW25
123	123	49	83	83	365	15626-365LW25
128	128	51	87	87	410	15626-410LW25
133	133	53	90	90	460	15626-460LW25
138	138	54	93	93	510	15626-510LW25
143	143	56	96	96	565	15626-565LW25
148	148	58	100	100	625	15626-625LW25
153	153	59	103	103	690	15626-690LW25
158	158	61	106	106	760	15626-760LW25



Extra High Projection

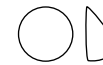
Width	Height	Proj.	Curve	LVC	Vol. (ml)	Order N°
93	93	47	69	69	195	15627-195LW25
98	98	49	73	73	225	15627-225LW25
103	103	51	77	77	260	15627-260LW25
108	108	53	80	80	300	15627-300LW25
113	113	55	84	84	345	15627-345LW25
118	118	57	87	87	390	15627-390LW25
123	123	59	91	91	440	15627-440LW25
128	128	61	94	94	495	15627-495LW25
133	133	63	98	98	555	15627-555LW25
138	138	65	101	101	615	15627-615LW25
143	143	67	105	105	685	15627-685LW25
148	148	69	108	108	755	15627-755LW25
153	153	71	112	112	835	15627-835LW25*
158	158	73	115	115	920	15627-920LW25*

**Moderate Projection**

Width	Height	Proj.	Curve	LVC	Vol. (ml)	Order N°
103	103	35	50	69	155	15635-155LW25
108	108	36	52	72	175	15635-175LW25
113	113	37	55	75	200	15635-200LW25
118	118	39	57	78	230	15635-230LW25
123	123	40	59	82	255	15635-255LW25
128	128	41	61	85	290	15635-290LW25
133	133	42	63	88	320	15635-320LW25
138	138	44	66	91	355	15635-355LW25
143	143	45	68	94	395	15635-395LW25
148	148	46	70	97	435	15635-435LW25
153	153	47	72	100	480	15635-480LW25
158	158	49	74	103	525	15635-525LW25

High Projection

Width	Height	Proj.	Curve	LVC	Vol. (ml)	Order N°
103	103	43	57	76	190	15636-190LW25
108	108	44	59	79	220	15636-220LW25
113	113	46	62	83	250	15636-250LW25
118	118	48	64	86	285	15636-285LW25
123	123	49	67	89	320	15636-320LW25
128	128	51	69	93	360	15636-360LW25
133	133	53	72	96	405	15636-405LW25
138	138	54	74	100	450	15636-450LW25
143	143	56	77	103	500	15636-500LW25
148	148	58	79	107	550	15636-550LW25
153	153	59	82	110	610	15636-610LW25
158	158	61	84	114	670	15636-670LW25

**Extra High Projection**

Width	Height	Proj.	Curve	LVC	Vol. (ml)	Order N°
98	98	49	61	79	200	15637-200LW25
103	103	51	63	83	230	15637-230LW25
108	108	53	66	87	265	15637-265LW25
113	113	55	69	90	300	15637-300LW25
118	118	57	72	94	345	15637-345LW25
123	123	59	75	98	385	15637-385LW25
128	128	61	78	102	435	15637-435LW25
133	133	63	80	105	485	15637-485LW25
138	138	65	83	109	545	15637-545LW25
143	143	67	86	113	605	15637-605LW25
148	148	69	89	117	665	15637-665LW25
153	153	71	92	121	735	15637-735LW25
158	158	73	95	124	810	15637-810LW25

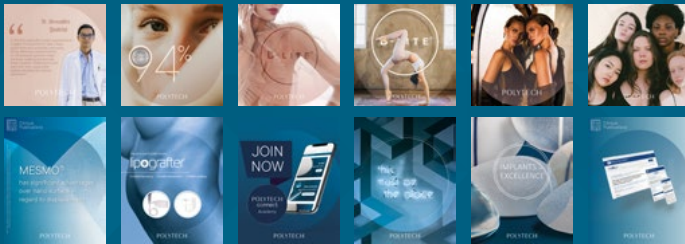
860k FOLLOWERS



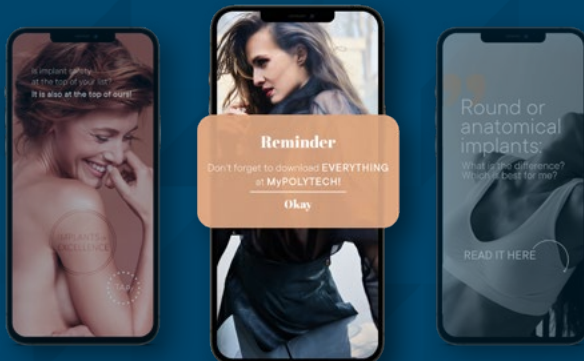
LARGEST SOCIAL MEDIA COMMUNITY

in breast aesthetics

CONTENT FOR PATIENTS



CONTENT FOR SURGEONS



MESMO® Opticon® AS



Moderate Projection

Width	Height	Proj.	Curve	LVC	Vol. (ml)	Order N°
113	95	37	51	67	170	15645-170LW25
118	100	39	53	70	190	15645-190LW25
123	104	40	55	72	215	15645-215LW25
128	108	41	57	75	240	15645-240LW25
133	112	42	59	78	270	15645-270LW25
138	116	44	61	81	300	15645-300LW25
143	121	45	63	83	330	15645-330LW25
148	125	46	65	86	365	15645-365LW25

High Projection

Width	Height	Proj.	Curve	LVC	Vol. (ml)	Order N°
113	95	46	58	75	210	15646-210LW25
118	100	48	61	78	240	15646-240LW25
123	104	49	63	81	270	15646-270LW25
128	108	51	65	84	305	15646-305LW25
133	112	53	68	87	340	15646-340LW25
138	116	54	70	90	380	15646-380LW25
143	121	56	72	93	420	15646-420LW25
148	125	58	75	96	465	15646-465LW25
153	129	59	77	99	510	15646-510LW25

Extra High Projection

Width	Height	Proj.	Curve	LVC	Vol. (ml)	Order N°
118	100	57	69	86	290	15647-290LW25
123	104	59	71	89	325	15647-325LW25
128	108	61	74	93	365	15647-365LW25
133	112	63	77	96	410	15647-410LW25



**Moderate Projection**

Width	Height	Proj.	Curve	LVC	Vol. (ml)	Order N°
96	96	34	62	62	130	30625-130LW25
106	106	37	68	68	175	30625-175LW25
111	111	38	71	71	200	30625-200LW25
116	116	39	74	74	230	30625-230LW25
121	121	41	77	77	260	30625-260LW25
126	126	42	80	80	290	30625-290LW25
131	131	43	83	83	325	30625-325LW25
136	136	44	86	86	365	30625-365LW25
141	141	46	89	89	405	30625-405LW25
146	146	47	92	92	450	30625-450LW25

High Projection

Width	Height	Proj.	Curve	LVC	Vol. (ml)	Order N°
101	101	43	71	71	190	30626-190LW25
106	106	45	74	74	215	30626-215LW25
111	111	46	77	77	250	30626-250LW25
116	116	48	80	80	285	30626-285LW25
121	121	50	83	83	325	30626-325LW25
126	126	51	87	87	365	30626-365LW25
131	131	53	90	90	410	30626-410LW25
136	136	55	93	93	460	30626-460LW25
141	141	56	96	96	510	30626-510LW25
146	146	58	100	100	565	30626-565LW25
151	151	60	103	103	625	30626-625LW25
156	156	61	106	106	690	30626-690LW25

**Extra High Projection**

Width	Height	Proj.	Curve	LVC	Vol. (ml)	Order N°
106	106	53	80	80	260	30627-260LW25
111	111	55	84	84	300	30627-300LW25
116	116	57	87	87	345	30627-345LW25
121	121	59	91	91	390	30627-390LW25
126	126	61	94	94	440	30627-440LW25
131	131	63	98	98	495	30627-495LW25
136	136	65	101	101	555	30627-555LW25
141	141	67	105	105	615	30627-615LW25
146	146	69	108	108	685	30627-685LW25
151	151	71	112	112	755	30627-755LW25
156	156	73	115	115	835	30627-835LW25*

**Moderate Projection**

Width	Height	Proj.	Curve	LVC	Vol. (ml)	Order N°
106	106	37	52	72	155	30635-155LW25
111	111	38	55	75	175	30635-175LW25
116	116	39	57	78	200	30635-200LW25
121	121	41	59	82	230	30635-230LW25
126	126	42	61	85	255	30635-255LW25
131	131	43	63	88	290	30635-290LW25
136	136	44	66	91	320	30635-320LW25
141	141	46	68	94	355	30635-355LW25
146	146	47	70	97	395	30635-395LW25
151	151	48	72	100	435	30635-435LW25
156	156	49	74	103	480	30635-480LW25

High Projection

Width	Height	Proj.	Curve	LVC	Vol. (ml)	Order N°
106	106	45	59	79	190	30636-190LW25
111	111	46	62	83	220	30636-220LW25
116	116	48	64	86	250	30636-250LW25
121	121	50	67	89	285	30636-285LW25
126	126	51	69	93	320	30636-320LW25
131	131	53	72	96	360	30636-360LW25
136	136	55	74	100	405	30636-405LW25
141	141	56	77	103	450	30636-450LW25
146	146	58	79	107	500	30636-500LW25
151	151	60	82	110	550	30636-550LW25
156	156	61	84	114	610	30636-610LW25
161	161	63	87	117	670	30636-670LW25

**Extra High Projection**

Width	Height	Proj.	Curve	LVC	Vol. (ml)	Order N°
106	106	53	66	87	230	30637-230LW25
111	111	55	69	90	265	30637-265LW25
116	116	57	72	94	300	30637-300LW25
121	121	59	75	98	345	30637-345LW25
126	126	61	78	102	385	30637-385LW25
131	131	63	80	105	435	30637-435LW25
136	136	65	83	109	485	30637-485LW25
141	141	67	86	113	545	30637-545LW25
146	146	69	89	117	605	30637-605LW25
151	151	71	92	121	665	30637-665LW25
156	156	73	95	124	735	30637-735LW25
161	161	75	97	128	810	30637-810LW25*



Moderate Projection

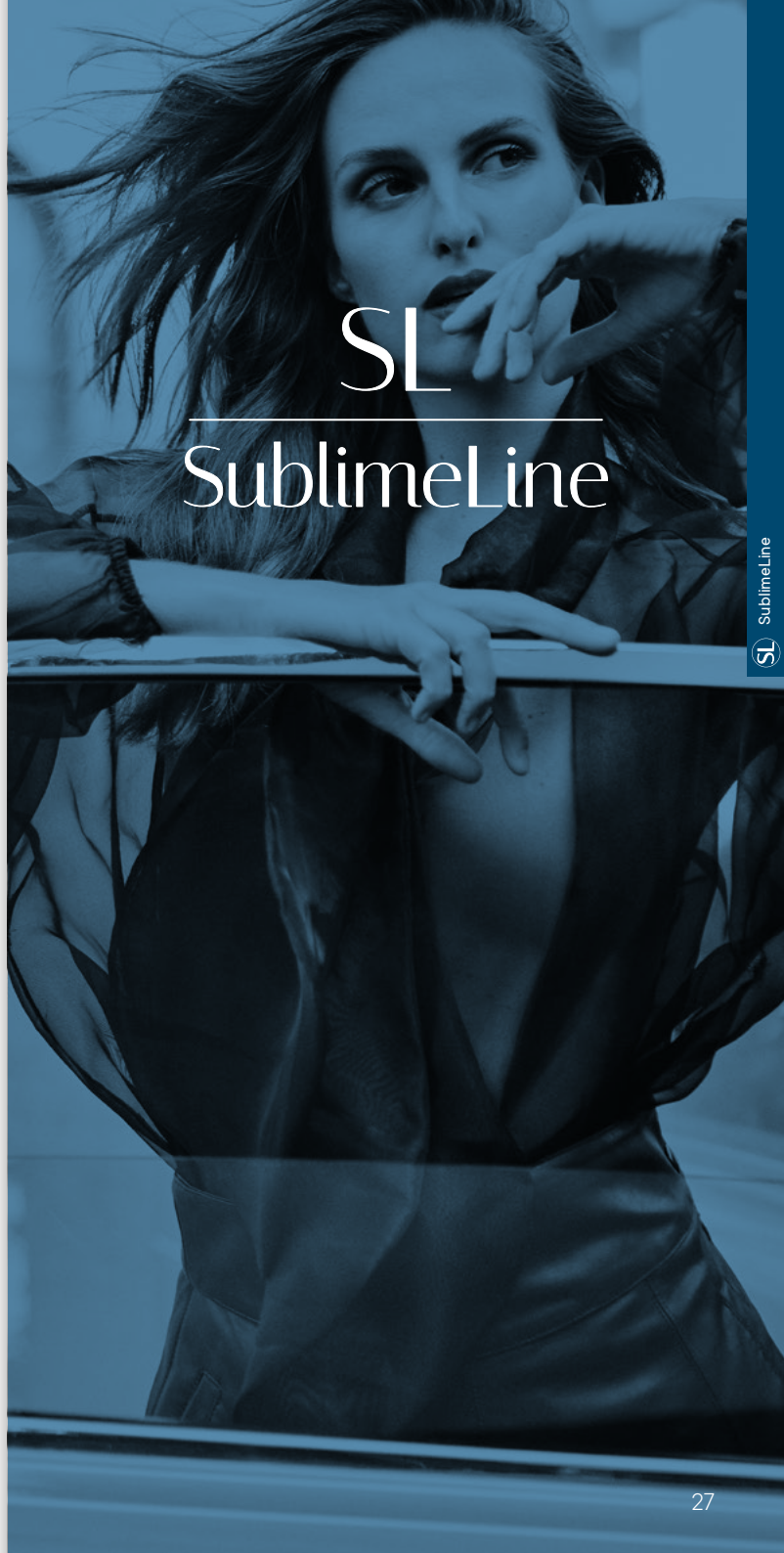
Width	Height	Proj.	Curve	LVC	Vol. (ml)	Order N°
116	98	39	53	70	170	30645-170LW25
121	103	41	55	72	190	30645-190LW25
126	107	42	57	75	215	30645-215LW25
131	111	43	59	78	240	30645-240LW25
136	115	44	61	81	270	30645-270LW25
141	119	46	63	83	300	30645-300LW25
146	124	47	65	86	330	30645-330LW25
151	128	48	67	89	365	30645-365LW25

High Projection

Width	Height	Proj.	Curve	LVC	Vol. (ml)	Order N°
116	98	48	61	78	210	30646-210LW25
121	103	50	63	81	240	30646-240LW25
126	107	51	65	84	270	30646-270LW25
131	111	53	68	87	305	30646-305LW25
136	115	55	70	90	340	30646-340LW25
141	119	56	72	93	380	30646-380LW25
146	124	58	75	96	420	30646-420LW25
151	128	60	77	99	465	30646-465LW25
156	132	61	80	102	510	30646-510LW25
161	136	63	82	105	560	30646-560LW25

Extra High Projection

Width	Height	Proj.	Curve	LVC	Vol. (ml)	Order N°
121	103	59	71	89	290	30647-290LW25
126	107	61	74	93	325	30647-325LW25
131	111	63	77	96	365	30647-365LW25
136	115	65	79	100	410	30647-410LW25
141	119	67	82	103	455	30647-455LW25
146	124	69	85	106	510	30647-510LW25



SL
SublimeLine



Low Projection

Width	Height	Proj.	Curve	LVC	Vol. (ml)	Order N°	Sizer
90	90	26	54	54	110	15724-110	20724-110H
95	95	27	57	57	125	15724-125	20724-125H
100	100	28	60	60	150	15724-150	20724-150H
105	105	29	62	62	165	15724-165	20724-165H
110	110	29	65	65	185	15724-185	20724-185H
115	115	30	68	68	215	15724-215	20724-215H
120	120	31	71	71	235	15724-235	20724-235H
125	125	32	73	73	270	15724-270	20724-270H
130	130	33	76	76	295	15724-295	20724-295H
135	135	34	79	79	330	15724-330	20724-330H

Moderate Projection

Width	Height	Proj.	Curve	LVC	Vol. (ml)	Order N°	Sizer
80	80	31	53	53	105	15725-105	20725-105H
85	85	32	56	56	120	15725-120	20725-120H
90	90	33	59	59	145	15725-145	20725-145H
95	95	35	62	62	165	15725-165	20725-165H
100	100	36	65	65	195	15725-195	20725-195H
105	105	37	68	68	220	15725-220	20725-220H
110	110	38	71	71	255	15725-255	20725-255H
115	115	40	74	74	285	15725-285	20725-285H
118	118	40	75	75	300	15725-300	20725-300H
120	120	41	77	77	320	15725-320	20725-320H
125	125	43	80	80	360	15725-360	20725-360H
130	130	44	83	83	400	15725-400	20725-400H
135	135	45	86	86	445	15725-445	20725-445H
140	140	47	89	89	495	15725-495	20725-495H
145	145	48	92	92	545	15725-545	20725-545H
150	150	49	95	95	600	15725-600	20725-600H



High Projection

Width	Height	Proj.	Curve	LVC	Vol. (ml)	Order N°	Sizer
80	80	37	58	58	125	15726-125	20726-125H
85	85	39	61	61	155	15726-155	20726-155H
90	90	40	64	64	180	15726-180	20726-180H
95	95	42	67	67	210	15726-210	20726-210H
100	100	44	71	71	235	15726-235	20726-235H
103	103	45	72	72	255	15726-255	20726-255H
105	105	45	74	74	275	15726-275	20726-275H
108	108	46	75	75	295	15726-295	20726-295H
110	110	47	77	77	315	15726-315	20726-315H
113	113	48	79	79	335	15726-335	20726-335H
115	115	49	80	80	360	15726-360	20726-360H
120	120	51	83	83	400	15726-400	20726-400H
125	125	53	87	87	450	15726-450	20726-450H
130	130	55	90	90	505	15726-505	20726-505H
135	135	57	93	93	560	15726-560	20726-560H
140	140	59	96	96	620	15726-620	20726-620H
145	145	61	100	100	690	15726-690	20726-690H

Extra High Projection

Width	Height	Proj.	Curve	LVC	Vol. (ml)	Order N°	Sizer
80	80	45	62	62	155	15727-155	20727-155H
85	85	47	66	66	180	15727-180	20727-180H
90	90	49	69	69	215	15727-215	20727-215H
95	95	51	73	73	250	15727-250	20727-250H
100	100	53	77	77	285	15727-285	20727-285H
103	103	54	78	78	305	15727-305	20727-305H
105	105	55	80	80	330	15727-330	20727-330H
108	108	56	82	82	355	15727-355	20727-355H
110	110	57	84	84	380	15727-380	20727-380H
115	115	59	87	87	430	15727-430	20727-430H
120	120	61	91	91	485	15727-485	20727-485H
125	125	63	94	94	545	15727-545	20727-545H
130	130	65	98	98	610	15727-610	20727-610H
135	135	67	101	101	675	15727-675	20727-675H

**Moderate Projection**

Width	Height	Proj.	Curve	LVC	Vol. (ml)	Order N°	Sizer
85	85	32	44	60	110	15735-110	20735-110H
90	90	33	46	63	125	15735-125	20735-125H
95	95	35	48	66	150	15735-150	20735-150H
100	100	36	50	69	170	15735-170	20735-170H
105	105	37	52	72	195	15735-195	20735-195H
110	110	38	55	75	220	15735-220	20735-220H
115	115	40	57	78	255	15735-255	20735-255H
120	120	41	59	82	280	15735-280	20735-280H
125	125	43	61	85	320	15735-320	20735-320H
130	130	44	63	88	350	15735-350	20735-350H
135	135	45	66	91	390	15735-390	20735-390H
140	140	47	68	94	435	15735-435	20735-435H
145	145	48	70	97	480	15735-480	20735-480H
150	150	49	72	100	530	15735-530	20735-530H
155	155	51	74	103	580	15735-580	20735-580H

High Projection

Width	Height	Proj.	Curve	LVC	Vol. (ml)	Order N°	Sizer
90	90	40	52	69	160	15736-160	20736-160H
95	95	42	54	72	180	15736-180	20736-180H
100	100	44	57	76	210	15736-210	20736-210H
105	105	45	59	79	240	15736-240	20736-240H
110	110	47	62	83	275	15736-275	20736-275H
115	115	49	64	86	315	15736-315	20736-315H
120	120	51	67	89	350	15736-350	20736-350H
125	125	53	69	93	395	15736-395	20736-395H
130	130	55	72	96	445	15736-445	20736-445H
135	135	57	74	100	495	15736-495	20736-495H
140	140	59	77	103	550	15736-550	20736-550H
145	145	61	79	107	605	15736-605	20736-605H
150	150	62	82	110	670	15736-670	20736-670H

**Extra High Projection**

Width	Height	Proj.	Curve	LVC	Vol. (ml)	Order N°	Sizer
90	90	49	58	75	185	15737-185	20737-185H
95	95	51	61	79	220	15737-220	20737-220H
100	100	53	63	83	255	15737-255	20737-255H
105	105	55	66	87	290	15737-290	20737-290H
110	110	57	69	90	330	15737-330	20737-330H
115	115	59	72	94	380	15737-380	20737-380H
120	120	61	75	98	425	15737-425	20737-425H
125	125	63	78	102	480	15737-480	20737-480H
130	130	65	80	105	535	15737-535	20737-535H
135	135	67	83	109	600	15737-600	20737-600H
140	140	69	86	113	665	15737-665	20737-665H
145	145	71	89	117	730	15737-730	20737-730H

Our Unique Online Education Platform



- Online 24/7 access
- Supporting your success
- Hosted by world leading educators



Scan the QR code
to start learning today

Moderate Projection

Width	Height	Proj.	Curve	LVC	Vol. (ml)	Order N°	Sizer
110	101	39	54	72	205	15755-205	20755-205H
115	106	41	56	75	230	15755-230	20755-230H
120	110	42	58	77	260	15755-260	20755-260H
125	115	43	60	80	290	15755-290	20755-290H
130	120	44	62	83	325	15755-325	20755-325H
135	124	46	64	86	365	15755-365	20755-365H
140	129	47	67	89	400	15755-400	20755-400H
145	133	48	69	92	440	15755-440	20755-440H
150	138	49	71	95	485	15755-485	20755-485H
155	143	51	73	98	535	15755-535	20755-535H

High Projection

Width	Height	Proj.	Curve	LVC	Vol. (ml)	Order N°	Sizer
110	101	48	61	79	255	15756-255	20756-255H
115	106	50	63	82	285	15756-285	20756-285H
120	110	51	66	86	325	15756-325	20756-325H
125	115	53	68	89	365	15756-365	20756-365H
130	120	55	71	92	405	15756-405	20756-405H
135	124	56	73	96	455	15756-455	20756-455H
140	129	58	76	99	505	15756-505	20756-505H
145	133	60	78	102	555	15756-555	20756-555H
150	138	61	81	106	615	15756-615	20756-615H

Extra High Projection

Width	Height	Proj.	Curve	LVC	Vol. (ml)	Order N°	Sizer
100	92	53	63	80	230	15757-230	20757-230H
105	97	55	66	83	270	15757-270	20757-270H
110	101	57	69	87	310	15757-310	20757-310H
115	106	59	71	91	345	15757-345	20757-345H
120	110	61	74	94	390	15757-390	20757-390H
125	115	63	77	98	440	15757-440	20757-440H
130	120	65	80	102	495	15757-495	20757-495H
135	124	67	83	105	550	15757-550	20757-550H
140	129	69	85	109	610	15757-610	20757-610H



**Moderate Projection**

Width	Height	Proj.	Curve	LVC	Vol. (ml)	Order N°	Sizer
95	80	35	45	59	125	15745-125	20745-125H
100	84	36	47	61	145	15745-145	20745-145H
105	88	37	49	64	165	15745-165	20745-165H
110	92	38	51	67	185	15745-185	20745-185H
115	97	40	53	70	210	15745-210	20745-210H
120	101	41	55	72	235	15745-235	20745-235H
125	105	43	57	75	265	15745-265	20745-265H
130	109	44	59	78	295	15745-295	20745-295H
135	113	45	61	81	330	15745-330	20745-330H
140	118	47	63	83	365	15745-365	20745-365H
145	122	48	65	86	400	15745-400	20745-400H
150	126	49	67	89	445	15745-445	20745-445H
155	130	51	69	92	490	15745-490	20745-490H

High Projection

Width	Height	Proj.	Curve	LVC	Vol. (ml)	Order N°	Sizer
90	76	40	49	62	130	15746-130	20746-130H
95	80	42	51	65	155	15746-155	20746-155H
100	84	44	54	68	175	15746-175	20746-175H
105	88	45	56	71	205	15746-205	20746-205H
110	92	47	58	75	230	15746-230	20746-230H
115	97	49	61	78	265	15746-265	20746-265H
120	101	51	63	81	295	15746-295	20746-295H
125	105	53	65	84	335	15746-335	20746-335H
130	109	55	68	87	375	15746-375	20746-375H
135	113	57	70	90	420	15746-420	20746-420H
140	118	59	72	93	460	15746-460	20746-460H
145	122	61	75	96	510	15746-510	20746-510H
150	126	62	77	99	560	15746-560	20746-560H
155	130	64	80	102	615	15746-615	20746-615H

**Extra High Projection**

Width	Height	Proj.	Curve	LVC	Vol. (ml)	Order N°	Sizer
100	84	53	61	76	215	15747-215	20747-215H
105	88	55	63	79	240	15747-240	20747-240H
110	92	57	66	82	280	15747-280	20747-280H
115	97	59	69	86	320	15747-320	20747-320H
120	101	61	71	89	360	15747-360	20747-360H
125	105	63	74	93	400	15747-400	20747-400H
130	109	65	77	96	450	15747-450	20747-450H
135	113	67	79	100	500	15747-500	20747-500H
140	118	69	82	103	560	15747-560	20747-560H
145	122	71	85	106	615	15747-615	20747-615H
150	126	73	87	110	680	15747-680	20747-680H
155	130	75	90	113	750	15747-750	20747-750H

**Low Projection**

Width	Height	Proj.	Curve	LVC	Vol. (ml)	Order N°	Sizer
100	100	28	44	63	125	20734-125	20734-125H
105	105	29	46	66	150	20734-150	20734-150H
110	110	29	48	68	165	20734-165	20734-165H
115	115	30	50	71	185	20734-185	20734-185H
120	120	31	52	74	210	20734-210	20734-210H
125	125	32	54	77	235	20734-235	20734-235H
130	130	33	56	80	265	20734-265	20734-265H
135	135	34	58	83	290	20734-290	20734-290H
140	140	35	59	86	320	20734-320	20734-320H
145	145	35	61	88	350	20734-350	20734-350H
150	150	36	63	91	390	20734-390	20734-390H

Moderate Projection

Width	Height	Proj.	Curve	LVC	Vol. (ml)	Order N°	Sizer
85	85	32	44	60	110	20735-110	20735-110H
90	90	33	46	63	125	20735-125	20735-125H
95	95	35	48	66	150	20735-150	20735-150H
100	100	36	50	69	170	20735-170	20735-170H
105	105	37	52	72	195	20735-195	20735-195H
110	110	38	55	75	220	20735-220	20735-220H
115	115	40	57	78	255	20735-255	20735-255H
120	120	41	59	82	280	20735-280	20735-280H
125	125	43	61	85	320	20735-320	20735-320H
130	130	44	63	88	350	20735-350	20735-350H
135	135	45	66	91	390	20735-390	20735-390H
140	140	47	68	94	435	20735-435	20735-435H
145	145	48	70	97	480	20735-480	20735-480H
150	150	49	72	100	530	20735-530	20735-530H

**High Projection**

Width	Height	Proj.	Curve	LVC	Vol. (ml)	Order N°	Sizer
85	85	39	49	65	130	20736-130	20736-130H
90	90	40	52	69	160	20736-160	20736-160H
95	95	42	54	72	180	20736-180	20736-180H
100	100	44	57	76	210	20736-210	20736-210H
105	105	45	59	79	240	20736-240	20736-240H
110	110	47	62	83	275	20736-275	20736-275H
115	115	49	64	86	315	20736-315	20736-315H
120	120	51	67	89	350	20736-350	20736-350H
125	125	53	69	93	395	20736-395	20736-395H
130	130	55	72	96	445	20736-445	20736-445H
135	135	57	74	100	495	20736-495	20736-495H
140	140	59	77	103	550	20736-550	20736-550H
145	145	61	79	107	605	20736-605	20736-605H
150	150	62	82	110	670	20736-670	20736-670H

Extra High Projection

Width	Height	Proj.	Curve	LVC	Vol. (ml)	Order N°	Sizer
95	95	51	61	79	220	20737-220	20737-220H
100	100	53	63	83	255	20737-255	20737-255H
105	105	55	66	87	290	20737-290	20737-290H
110	110	57	69	90	330	20737-330	20737-330H
115	115	59	72	94	380	20737-380	20737-380H
120	120	61	75	98	425	20737-425	20737-425H
125	125	63	78	102	480	20737-480	20737-480H
130	130	65	80	105	535	20737-535	20737-535H
135	135	67	83	109	600	20737-600	20737-600H
140	140	69	86	113	665	20737-665	20737-665H
145	145	71	89	117	730	20737-730	20737-730H

**Low Projection**

Width	Height	Proj.	Curve	LVC	Vol. (ml)	Order N°	Sizer
100	84	28	41	55	110	20744-110	20744-110H
105	88	29	42	57	120	20744-120	20744-120H
110	92	29	44	60	140	20744-140	20744-140H
115	97	30	46	62	160	20744-160	20744-160H
120	101	31	48	65	175	20744-175	20744-175H
125	105	32	49	67	200	20744-200	20744-200H
130	109	33	51	70	220	20744-220	20744-220H
135	113	34	53	72	240	20744-240	20744-240H
140	118	35	55	75	270	20744-270	20744-270H
145	122	35	56	77	295	20744-295	20744-295H
150	126	36	58	80	325	20744-325	20744-325H
155	130	37	60	82	360	20744-360	20744-360H

Moderate Projection

Width	Height	Proj.	Curve	LVC	Vol. (ml)	Order N°	Sizer
95	80	35	45	59	125	20745-125	20745-125H
100	84	36	47	61	145	20745-145	20745-145H
105	88	37	49	64	165	20745-165	20745-165H
110	92	38	51	67	185	20745-185	20745-185H
115	97	40	53	70	210	20745-210	20745-210H
120	101	41	55	72	235	20745-235	20745-235H
125	105	43	57	75	265	20745-265	20745-265H
130	109	44	59	78	295	20745-295	20745-295H
135	113	45	61	81	330	20745-330	20745-330H
140	118	47	63	83	365	20745-365	20745-365H
145	122	48	65	86	400	20745-400	20745-400H
150	126	49	67	89	445	20745-445	20745-445H
155	130	51	69	92	490	20745-490	20745-490H

**High Projection**

Width	Height	Proj.	Curve	LVC	Vol. (ml)	Order N°	Sizer
90	76	40	49	62	130	20746-130	20746-130H
95	80	42	51	65	155	20746-155	20746-155H
100	84	44	54	68	175	20746-175	20746-175H
105	88	45	56	71	205	20746-205	20746-205H
110	92	47	58	75	230	20746-230	20746-230H
115	97	49	61	78	265	20746-265	20746-265H
120	101	51	63	81	295	20746-295	20746-295H
125	105	53	65	84	335	20746-335	20746-335H
130	109	55	68	87	375	20746-375	20746-375H
135	113	57	70	90	420	20746-420	20746-420H
140	118	59	72	93	460	20746-460	20746-460H
145	122	61	75	96	510	20746-510	20746-510H
150	126	62	77	99	560	20746-560	20746-560H
155	130	64	80	102	615	20746-615	20746-615H

Extra High Projection

Width	Height	Proj.	Curve	LVC	Vol. (ml)	Order N°	Sizer
100	84	53	61	76	215	20747-215	20747-215H
105	88	55	63	79	240	20747-240	20747-240H
100	92	57	66	82	280	20747-280	20747-280H
115	97	59	69	86	320	20747-320	20747-320H
120	101	61	71	89	360	20747-360	20747-360H
125	105	63	74	93	400	20747-400	20747-400H
130	109	65	77	96	450	20747-450	20747-450H
135	113	67	79	100	500	20747-500	20747-500H
140	118	69	82	103	560	20747-560	20747-560H
145	122	71	85	106	615	20747-615	20747-615H
150	126	73	87	110	680	20747-680	20747-680H
155	130	75	90	113	750	20747-750	20747-750H



Low Projection

Width	Height	Proj.	Curve	LVC	Vol. (ml)	Order N°	Sizer
93	93	28	57	57	110	30724-110	20724-110H
98	98	29	60	60	125	30724-125	20724-125H
103	103	30	62	62	150	30724-150	20724-150H
108	108	31	65	65	168	30724-165	20724-165H
113	113	31	68	68	185	30724-185	20724-185H
118	118	32	71	71	215	30724-215	20724-215H
123	123	33	73	73	235	30724-235	20724-235H
128	128	34	76	76	270	30724-270	20724-270H
133	133	35	79	79	295	30724-295	20724-295H
138	138	36	82	82	330	30724-330	20724-330H

Moderate Projection

Width	Height	Proj.	Curve	LVC	Vol. (ml)	Order N°	Sizer
88	88	34	60	60	120	30725-120	20725-120H
93	93	35	63	63	145	30725-145	20725-145H
98	98	37	66	66	165	30725-165	20725-165H
103	103	38	69	69	195	30725-195	20725-195H
108	108	39	72	72	220	30725-220	20725-220H
113	113	40	75	75	255	30725-255	20725-255H
118	118	42	78	78	285	30725-285	20725-285H
121	121	42	79	79	300	30725-300	20725-300H
123	123	43	81	81	320	30725-320	20725-320H
128	128	45	84	84	360	30725-360	20725-360H
133	133	46	87	87	400	30725-400	20725-400H
138	138	47	90	90	445	30725-445	20725-445H



High Projection

Width	Height	Proj.	Curve	LVC	Vol. (ml)	Order N°	Sizer
83	83	39	62	62	125	30726-125	20726-125H
88	88	41	65	65	155	30726-155	20726-155H
93	93	42	68	68	180	30726-180	20726-180H
98	98	44	71	71	210	30726-210	20726-210H
103	103	46	75	75	235	30726-235	20726-235H
106	106	47	76	76	255	30726-255	20726-255H
108	108	47	78	78	275	30726-275	20726-275H
111	111	48	79	79	295	30726-295	20726-295H
113	113	49	81	81	315	30726-315	20726-315H
116	116	50	83	83	335	30726-335	20726-335H
118	118	51	84	84	360	30726-360	20726-360H
123	123	53	87	87	400	30726-400	20726-400H
128	128	55	91	91	450	30726-450	20726-450H
133	133	57	94	94	505	30726-505	20726-505H
138	138	59	97	97	560	30726-560	20726-560H
143	143	61	100	100	620	30726-620	20726-620H
148	148	63	104	104	690	30726-690	20726-690H

Extra High Projection

Width	Height	Proj.	Curve	LVC	Vol. (ml)	Order N°	Sizer
83	83	47	66	66	155	30727-155	20727-155H
88	88	49	70	70	180	30727-180	20727-180H
93	93	51	73	73	215	30727-215	20727-215H
98	98	53	77	77	250	30727-250	20727-250H
103	103	55	81	81	285	30727-285	20727-285H
106	106	56	82	82	305	30727-305	20727-305H
108	108	57	84	84	330	30727-330	20727-330H
111	111	58	86	86	355	30727-355	20727-355H
113	113	59	88	88	380	30727-380	20727-380H
118	118	61	91	91	430	30727-430	20727-430H
123	123	63	95	95	485	30727-485	20727-485H
128	128	65	98	98	545	30727-545	20727-545H
133	133	67	102	102	610	30727-610	20727-610H
138	138	69	105	105	675	30727-675	20727-675H

The polyurethane cover of Microthane® implants determines a minimal difference in measurements compared to smooth sizers.
 Note: Sizers are filled with silicone gel with smooth surface, sterile, re-sterilisable.

**Low Projection**

Width	Height	Proj.	Curve	LVC	Vol. (ml)	Order N°	Sizer
113	113	31	50	71	165	30734-165	20734-165H
118	118	32	52	74	185	30734-185	20734-185H
123	123	33	54	77	210	30734-210	20734-210H
128	128	34	56	80	235	30734-235	20734-235H
133	133	35	58	83	265	30734-265	20734-265H
138	138	36	59	86	290	30734-290	20734-290H
143	143	37	61	88	320	30734-320	20734-320H

Moderate Projection

Width	Height	Proj.	Curve	LVC	Vol. (ml)	Order N°	Sizer
88	88	34	48	63	110	30735-110	20735-110H
93	93	35	50	66	125	30735-125	20735-125H
98	98	37	52	69	150	30735-150	20735-150H
103	103	38	54	72	170	30735-170	20735-170H
108	108	39	56	75	195	30735-195	20735-195H
113	113	40	59	78	220	30735-220	20735-220H
118	118	42	61	82	255	30735-255	20735-255H
123	123	43	63	85	280	30735-280	20735-280H
128	128	45	65	88	320	30735-320	20735-320H
133	133	46	67	91	350	30735-350	20735-350H
138	138	47	70	94	390	30735-390	20735-390H
143	143	49	72	97	435	30735-435	20735-435H
148	148	50	74	100	480	30735-480	20735-480H
153	153	51	76	103	530	30735-530	20735-530H

**High Projection**

Width	Height	Proj.	Curve	LVC	Vol. (ml)	Order N°	Sizer
88	88	41	53	69	130	30736-130	20736-130H
93	93	42	56	72	160	30736-160	20736-160H
98	98	44	58	76	180	30736-180	20736-180H
103	103	46	61	79	210	30736-210	20736-210H
108	108	47	63	83	240	30736-240	20736-240H
113	113	49	66	86	275	30736-275	20736-275H
118	118	51	68	89	315	30736-315	20736-315H
123	123	53	71	93	350	30736-350	20736-350H
128	128	55	73	96	395	30736-395	20736-395H
133	133	57	76	100	445	30736-445	20736-445H
138	138	59	78	103	495	30736-495	20736-495H
143	143	61	81	107	550	30736-550	20736-550H
148	148	63	83	110	605	30736-605	20736-605H
153	153	64	86	114	670	30736-670	20736-670H

Extra High Projection

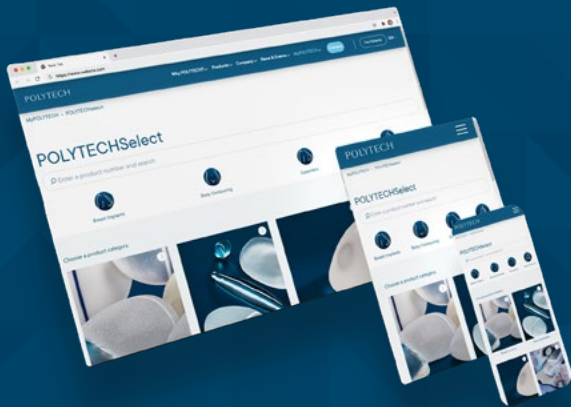
Width	Height	Proj.	Curve	LVC	Vol. (ml)	Order N°	Sizer
83	83	47	56	71	130	30737-130	20737-130H
88	88	49	59	75	160	30737-160	20737-160H
93	93	51	62	79	185	30737-185	20737-185H
98	98	53	65	83	220	30737-220	20737-220H
103	103	55	67	87	255	30737-255	20737-255H
108	108	57	70	90	290	30737-290	20737-290H
113	113	59	73	94	330	30737-330	20737-330H
118	118	61	76	98	380	30737-380	20737-380H
123	123	63	79	102	425	30737-425	20737-425H
128	128	65	82	105	480	30737-480	20737-480H
133	133	67	84	109	535	30737-535	20737-535H
138	138	69	87	113	600	30737-600	20737-600H
143	143	71	90	117	665	30737-665	20737-665H
148	148	73	93	121	730	30737-730	20737-730H



The polyurethane cover of Microthane® implants determines a minimal difference in measurements compared to smooth sizers.
 Note: Sizers are filled with silicone gel with smooth surface, sterile, re-sterilisable.



POLYTECHselect



3 SIMPLE CHOICES

- ▶ 24/7 online
- ▶ Implant tailoring
- ▶ Simple selection
- ▶ Match to unique patients needs



Scan the QR code

Moderate Projection

Width	Height	Proj.	Curve	LVC	Vol. (ml)	Order N°	Sizer
113	104	41	56	75	205	30755-205	20755-205H
118	109	43	58	77	230	30755-230	20755-230H
123	113	44	60	80	260	30755-260	20755-260H
128	118	45	62	83	290	30755-290	20755-290H
133	123	46	64	86	325	30755-325	20755-325H
138	127	48	67	89	365	30755-365	20755-365H
143	132	49	69	92	400	30755-400	20755-400H
148	136	50	71	95	440	30755-440	20755-440H
153	141	51	73	98	485	30755-485	20755-485H
158	146	53	75	101	535	30755-535	20755-535H

High Projection

Width	Height	Proj.	Curve	LVC	Vol. (ml)	Order N°	Sizer
113	104	50	63	82	255	30756-255	20756-255H
118	109	52	66	86	285	30756-285	20756-285H
123	113	53	68	89	325	30756-325	20756-325H
128	118	55	71	92	365	30756-365	20756-365H
133	123	57	73	96	405	30756-405	20756-405H
138	127	58	76	99	455	30756-455	20756-455H
143	132	60	78	102	505	30756-505	20756-505H
148	136	62	81	106	555	30756-555	20756-555H
153	141	63	83	109	615	30756-615	20756-615H

Extra High Projection

Width	Height	Proj.	Curve	LVC	Vol. (ml)	Order N°	Sizer
103	95	55	66	83	230	30757-230	20757-230H
108	100	57	69	87	270	30757-270	20757-270H
113	104	59	71	91	310	30757-310	20757-310H
118	109	61	74	94	345	30757-345	20757-345H
123	113	63	77	98	390	30757-390	20757-390H
128	118	65	80	102	440	30757-440	20757-440H
133	123	67	83	105	495	30757-495	20757-495H
138	127	69	85	109	550	30757-550	20757-550H
143	132	71	88	113	610	30757-610	20757-610H



The polyurethane cover of Microthane® implants determines a minimal difference in measurements compared to smooth sizers.
 Note: Sizers are filled with silicone gel with smooth surface, sterile, re-sterilisable.

Supply after order ≈ 8 to 10 weeks

Approx. measurements (mm)

**Low Projection**

Width	Height	Proj.	Curve	LVC	Vol. (ml)	Order N°	Sizer
108	91	31	44	60	120	30744-120	20744-120H
113	95	31	46	62	140	30744-140	20744-140H
118	100	32	48	65	160	30744-160	20744-160H
123	104	33	49	67	175	30744-175	20744-175H
128	108	34	51	70	200	30744-200	20744-200H
133	112	35	53	72	220	30744-220	20744-220H
138	116	36	55	75	240	30744-240	20744-240H
143	121	37	56	77	270	30744-270	20744-270H

Moderate Projection

Width	Height	Proj.	Curve	LVC	Vol. (ml)	Order N°	Sizer
98	83	37	49	61	125	30745-125	20745-125H
103	87	38	51	64	145	30745-145	20745-145H
108	91	39	53	67	165	30745-165	20745-165H
113	95	40	55	70	185	30745-185	20745-185H
118	100	42	57	72	210	30745-210	20745-210H
123	104	43	59	75	235	30745-235	20745-235H
128	108	45	61	78	265	30745-265	20745-265H
133	112	46	63	81	295	30745-295	20745-295H
138	116	47	65	83	330	30745-330	20745-330H
143	121	49	67	86	365	30745-365	20745-365H
148	125	50	69	89	400	30745-400	20745-400H
153	129	51	71	92	445	30745-445	20745-445H
158	133	53	73	95	490	30745-490	20745-490H

**High Projection**

Width	Height	Proj.	Curve	LVC	Vol. (ml)	Order N°	Sizer
93	79	42	53	65	130	30746-130	20746-130H
98	83	44	55	68	155	30746-155	20746-165H
103	87	46	58	71	175	30746-175	20746-175H
108	91	47	60	75	205	30746-205	20746-205H
113	95	49	62	78	230	30746-230	20746-230H
118	100	51	65	81	265	30746-265	20746-265H
123	104	53	67	84	295	30746-295	20746-295H
128	108	55	69	87	335	30746-335	20746-335H
133	112	57	72	90	375	30746-375	20746-375H
138	116	59	74	93	420	30746-420	20746-420H
143	121	61	76	96	460	30746-460	20746-460H
148	125	63	79	99	510	30746-510	20746-510H
153	129	64	81	102	560	30746-560	20746-560H
158	133	66	84	105	615	30746-615	20746-615H

Extra High Projection

Width	Height	Proj.	Curve	LVC	Vol. (ml)	Order N°	Sizer
103	87	55	65	79	215	30747-215	20747-215H
108	91	57	67	82	240	30747-240	20747-240H
113	95	59	70	86	280	30747-280	20747-280H
118	100	61	73	89	320	30747-320	20747-320H
123	104	63	75	93	360	30747-360	20747-360H
128	108	65	78	96	400	30747-400	20747-400H
133	112	67	81	100	450	30747-450	20747-450H
138	116	69	83	103	500	30747-500	20747-500H
143	121	71	86	106	560	30747-560	20747-560H
148	125	73	89	110	615	30747-615	20747-615H
153	129	75	91	113	680	30747-680	20747-680H
158	133	77	94	117	750	30747-750	20747-750H

The polyurethane cover of Microthane® implants determines a minimal difference in measurements compared to smooth sizers.
 Note: Sizers are filled with silicone gel with smooth surface, sterile, re-sterilisable.

**Low Projection**

Width	Height	Proj.	Curve	LVC	Vol. (ml)	Order N°	Sizer
90	90	26	54	54	110	10724-110	20724-110H
95	95	27	57	57	125	10724-125	20724-125H
100	100	28	60	60	150	10724-150	20724-150H
105	105	29	62	62	165	10724-165	20724-165H
110	110	29	65	65	185	10724-185	20724-185H
115	115	30	68	68	215	10724-215	20724-215H
120	120	31	71	71	235	10724-235	20724-235H
125	125	32	73	73	270	10724-270	20724-270H
130	130	33	76	76	295	10724-295	20724-295H
135	135	34	79	79	330	10724-330	20724-330H
140	140	35	82	82	365	10724-365	20724-365H

Moderate Projection

Width	Height	Proj.	Curve	LVC	Vol. (ml)	Order N°	Sizer
85	85	32	56	56	120	10725-120	20725-120H
90	90	33	59	59	145	10725-145	20725-145H
95	95	35	62	62	165	10725-165	20725-165H
100	100	36	65	65	195	10725-195	20725-195H
105	105	37	68	68	220	10725-220	20725-220H
110	110	38	71	71	255	10725-255	20725-255H
115	115	40	74	74	285	10725-285	20725-285H
118	118	40	75	75	300	10725-300	20725-300H
120	120	41	77	77	320	10725-320	20725-320H
125	125	43	80	80	360	10725-360	20725-360H
130	130	44	83	83	400	10725-400	20725-400H
135	135	45	86	86	445	10725-445	20725-445H
140	140	47	89	89	495	10725-495	20725-495H

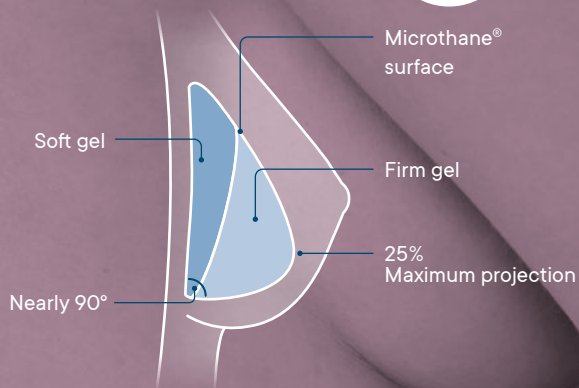
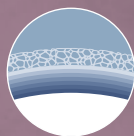
**High Projection**

Width	Height	Proj.	Curve	LVC	Vol. (ml)	Order N°	Sizer
80	80	37	58	58	125	10726-125	20726-125H
85	85	39	61	61	155	10726-155	20726-155H
90	90	40	64	64	180	10726-180	20726-180H
95	95	42	67	67	210	10726-210	20726-210H
100	100	44	71	71	235	10726-235	20726-235H
103	103	45	72	72	255	10726-255	20726-255H
105	105	45	74	74	275	10726-275	20726-275H
108	108	46	75	75	295	10726-295	20726-295H
110	110	47	77	77	315	10726-315	20726-315H
113	113	48	79	79	335	10726-335	20726-335H
115	115	49	80	80	360	10726-360	20726-360H
120	120	51	83	83	400	10726-400	20726-400H
125	125	53	87	87	450	10726-450	20726-450H
130	130	55	90	90	505	10726-505	20726-505H
135	135	57	93	93	560	10726-560	20726-560H
140	140	59	96	96	620	10726-620	20726-620H
145	145	61	100	100	690	10726-690	20726-690H

Extra High Projection

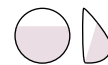
Width	Height	Proj.	Curve	LVC	Vol. (ml)	Order N°	Sizer
85	85	47	66	66	180	10727-180	20727-180H
90	90	49	69	69	215	10727-215	20727-215H
95	95	51	73	73	250	10727-250	20727-250H
100	100	53	77	77	285	10727-285	20727-285H
105	105	55	80	80	330	10727-330	20727-330H
110	110	57	84	84	380	10727-380	20727-380H
115	115	59	87	87	430	10727-430	20727-430H
120	120	61	91	91	485	10727-485	20727-485H
125	125	63	94	94	545	10727-545	20727-545H
130	130	65	98	98	610	10727-610	20727-610H
135	135	67	101	101	675	10727-675	20727-675H

Diagon\Gel[®] 4Two



A product range of its own

Diagon\Gel[®] 4Two AR Microthane[®]



High Projection

Width	Height	Proj.	Curve	LVC	Vol. (ml)	Order N°	Sizer
108	108	42	82	82	225	31631-225	21631-225H
112	112	44	85	85	255	31631-255	21631-255H
116	116	46	89	89	285	31631-285	21631-285H
120	120	48	92	92	315	31631-315	21631-315H
124	124	50	96	96	345	31631-345	21631-345H
128	128	52	99	99	400	31631-400	21631-400H
132	132	54	103	103	440	31631-440	21631-440H
136	136	56	106	106	480	31631-480	21631-480H

Extra High Projection

Width	Height	Proj.	Curve	LVC	Vol. (ml)	Order N°	Sizer
104	104	48	85	85	240	31632-240	21632-240H
108	108	50	89	89	270	31632-270	21632-270H
112	112	52	92	92	305	31632-305	21632-305H
116	116	54	96	96	335	31632-335	21632-335H
120	120	56	99	99	365	31632-365	21632-365H
124	124	58	103	103	390	31632-390	21632-390H
128	128	60	106	106	465	31632-465	21632-465H
132	132	62	110	110	500	31632-500	21632-500H

Diagon\Gel[®] 4Two AO Microthane[®]



High Projection

Width	Height	Proj.	Curve	LVC	Vol. (ml)	Order N°	Sizer
108	98	42	83	83	205	31641-205	21641-205H
112	102	44	86	86	235	31641-235	21641-235H
116	106	46	90	90	260	31641-260	21641-260H
120	110	48	93	93	290	31641-290	21641-290H
124	114	50	97	97	320	31641-320	21641-320H
128	118	52	100	100	360	31641-360	21641-360H

Extra High Projection

Width	Height	Proj.	Curve	LVC	Vol. (ml)	Order N°	Sizer
104	94	48	86	86	215	31642-215	21642-215H
108	98	50	90	90	245	31642-245	21642-245H
112	102	52	93	93	285	31642-285	21642-285H
116	106	54	97	97	305	31642-305	21642-305H
120	110	56	100	100	335	31642-335	21642-335H
124	114	58	104	104	380	31642-380	21642-380H
128	118	60	107	107	415	31642-415	21642-415H

AR = Anatomical Round / AO = Anatomical Oval

The polyurethane cover of Microthane[®] implants determines a minimal difference in measurements compared to smooth sizers.
Note: Sizers are filled with silicone gel with smooth surface, sterile, re-sterilisable.

Supply after order ≈ 8 to 10 weeks

Approx. measurements (mm)



Expanders

Breast Reconstruction & Tissue expanders

Breast expanders

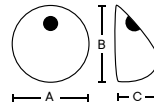
POLYtxt® Replicon® - Small integrated valve with magnet

Width	Height	Proj.	Vol. (ml)	Order N°
101	101	50	200	40637-200
116	116	56	300	40637-300
126	126	60	400	40637-400
136	136	64	500	40637-500
146	146	68	600	40637-600
151	151	70	700	40637-700



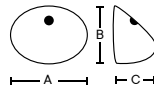
POLYtxt® Replicon® - Large integrated valve with magnet

Width	Height	Proj.	Vol. (ml)	Order N°
126	126	50	300	46636-300
141	141	55	450	46636-450
151	151	58	550	46636-550
101	101	50	200	46637-200
116	116	56	300	46637-300
126	126	60	400	46637-400
136	136	64	500	46637-500
146	146	68	600	46637-600
151	151	70	700	46637-700



POLYtxt® Opticon® - Small integrated valve with magnet

Width	Height	Proj.	Vol. (ml)	Order N°
111	93	54	200	40647-200
126	106	60	300	40647-300
136	114	64	400	40647-400
146	123	68	500	40647-500
156	131	72	600	40647-600
161	135	74	700	40647-700



POLYtxt® Opticon® - Large integrated valve with magnet

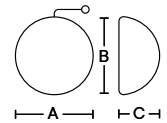
Width	Height	Proj.	Vol. (ml)	Order N°
126	106	50	250	46646-250
151	127	58	450	46646-450
111	93	54	200	46647-200
126	106	60	300	46647-300
131	110	62	350	46647-350
136	114	64	400	46647-400
146	123	68	500	46647-500
151	127	70	550	46647-550
156	131	72	600	46647-600
161	135	74	700	46647-700



Breast expanders

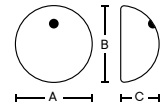
POLYtxt® Mème® Expanders with remote valve

Width	Height	Proj.	Vol. (ml)	Order N°
76	76	40	100	41627-100
96	96	48	200	41627-200
111	111	54	300	41627-300
121	121	58	400	41627-400
131	131	62	500	41627-500
136	136	64	600	41627-600
146	146	68	700	41627-700
151	151	70	800	41627-800



POLYtxt® Mème® - Small integrated valve with magnet

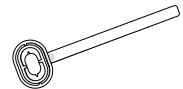
Width	Height	Proj.	Vol. (ml)	Order N°
96	96	48	200	40627-200
111	111	54	300	40627-300
121	121	58	400	40627-400
131	131	62	500	40627-500
136	136	64	600	40627-600
146	146	68	700	40627-700



IMPORTANT INFORMATION:

All expanders with remote valve are delivered with a large valve (compartment diameter ca. 17 mm, outer diameter ca. 34 mm). A small valve (compartment diameter ca. 11 mm, outer diameter ca. 22 mm) can be ordered separately (Order N° 72005).

All expanders with integrated magnetic valve are delivered with a magnet finder. Additional magnet finders can be ordered separately (Order N° 20738-012).



All integrated valves are equipped with a permanent magnet.

▲ WARNING:

- Expanders with integrated valve with magnet are not eligible for patients having pace-makers or patients who need an MRI examination during the implantation period.

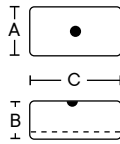
NOTE:

- Expanders with remote valve can be used for patients having pace-makers and during MRI examinations.
- Do not overfill the breast expander by more than 20% of nominal volume.

Tissue expanders

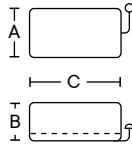
POLYsmooth™ Rectangular integrated valve with magnet

A	B	C	Vol. min	Vol. max	Order N°
51	38	110	160	200	50680-160
50	70	60	200	220	50680-200
59	50	96	250	280	50680-250
62	47	141	320	400	50680-320
55	56	136	400	430	50680-400
69	51	158	500	540	50680-500
50	70	180	600	650	50680-600
50	50	280	700	720	50680-700
87	57	185	800	960	50680-800



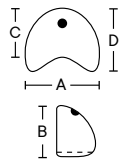
POLYsmooth™ Rectangular with remote valve

A	B	C	Vol. min	Vol. max	Order N°
38	38	38	50	60	51680-050
46	53	60	100	130	51680-100
51	38	110	160	200	51680-160
50	70	60	200	220	51680-200
59	50	96	250	280	51680-250
62	47	141	320	400	51680-320
55	56	136	400	430	51680-400
69	51	158	500	540	51680-500
50	70	180	600	650	51680-600
50	50	280	700	720	51680-700
87	57	185	800	960	51680-800



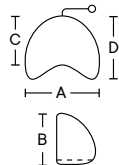
POLYsmooth™ Crescent integrated valve with magnet

A	B	C	D	Vol. (ml)	Order N°
95	60	45	70	200	50690-200
110	70	60	85	300	50690-300
125	75	65	95	400	50690-400
150	90	75	115	700	50690-700



POLYsmooth™ Crescent with remote valve

A	B	C	D	Vol. (ml)	Order N°
95	60	45	70	200	51690-200
110	70	60	85	300	51690-300
125	75	65	95	400	51690-400
150	90	75	115	700	51690-700



Body Contouring

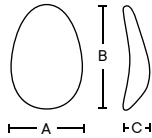
Gluteal Implants

Gluteal implants – Oval

Concave posterior

POLYsmooth™

A	B	C	Vol. (ml)	Order N°
80	120	27	115	10300-115
105	142	30	215	10300-215
114	152	33	290	10300-290
125	163	34	360	10300-360
132	174	38	450	10300-450



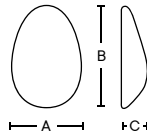
MESMO®

80	120	27	115	15300-115
105	142	30	215	15300-215
114	152	33	290	15300-290
125	163	34	360	15300-360
132	174	38	450	15300-450

Planar posterior

POLYsmooth™

A	B	C	Vol. (ml)	Order N°
90	130	40	240	10300-240
95	139	45	305	10300-305
100	148	48	365	10300-365
109	152	50	420	10300-420



MESMO®

90	130	40	240	15300-240
95	139	45	305	15300-305
100	148	48	365	15300-365
109	152	50	420	15300-420

Gluteal implants – Round

Concave posterior

POLYsmooth™

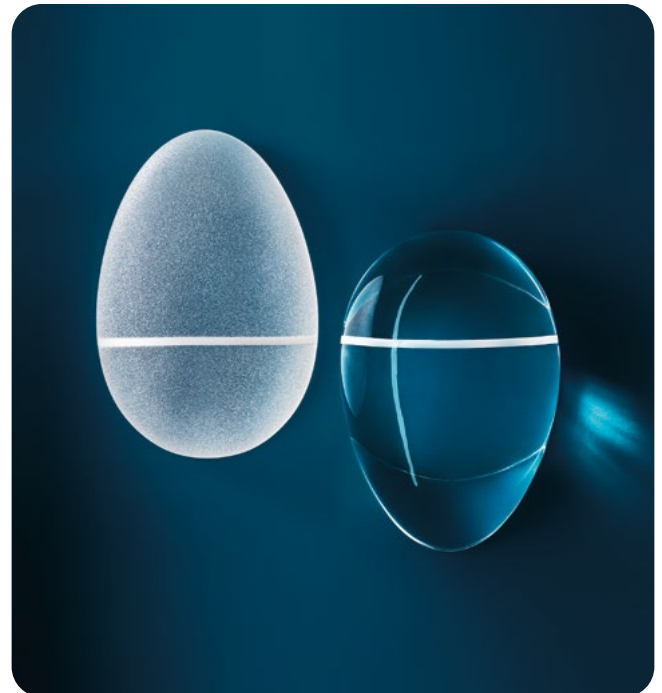
A	B	C	Vol. (ml)	Order N°
107	107	35	200	10301-200
112	112	41	250	10301-250
118	118	44	300	10301-300
127	127	43	360	10301-360
141	141	49	500	10301-500



Planar posterior

POLYsmooth™

A	B	C	Vol. (ml)	Order N°
107	107	35	225	10301-225
112	112	41	275	10301-275
118	118	44	340	10301-340
128	128	44	390	10301-390
141	141	49	560	10301-560



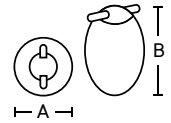
Body Contouring

Testicular Pectoral Calf

Testicular implants with needle guide

POLYsmooth™

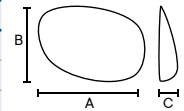
A	B	Vol. (ml)	Order N°
20	22	5	10100-005
26	33	12	10100-012
32	42	21	10100-021
33	48	27	10100-027
39	50	36	10100-036



Pectoral implants

POLYsmooth™

A	B	C	Vol. (ml)	Order N°
147	102	24	190	10500-190L
147	102	24	190	10500-190R
160	107	27	230	10500-230L
160	107	27	230	10500-230R
169	116	29	300	10500-300L
169	116	29	300	10500-300R



MESMO®

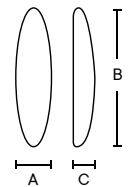
147	102	24	190	15500-190L
147	102	24	190	15500-190R
160	107	27	230	15500-230L
160	107	27	230	15500-230R
169	116	29	300	15500-300L
169	116	29	300	15500-300R

L = Left / R = Right

Calf implants

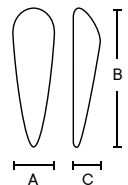
POLYsmooth™ Symmetrical design

A	B	C	Vol. (ml)	Order N°
21	62	16	12	10200-012
30	102	19	30	10200-030
33	157	25	70	10200-070
32	195	23	90	10200-090
34	268	25	120	10200-120
44	262	25	140	10200-140



POLYsmooth™ Anatomical design

47	151	24	85	10201-085
54	197	25	140	10201-140
58	231	26	180	10201-180

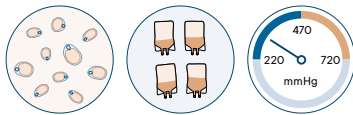


lipografter®



THE ALL-IN-ONE CLOSED SYSTEM

- ⊛ Closed Harvesting
- ⊛ Closed Decantation
- ⊛ Lower vacuum pressure



LIPOGRAFTER®

Sterile kit, single use disposable device. Kit includes: KVAC®, AT-Valve®, 4 Collection bags with silicone tubing and luer connectors.

Order N°	Specification
72100	1 Kit LipoGrafter®
72101	Bundle of 4 LipoGrafter®

POLYsleeve™ – Insertion sleeve for breast implants

The polyethylene insertion sleeve avoids direct contact between the implant and skin, minimizing bacterial exposure and supporting a "no touch" implantation technique. Dimensions: 18x37cm. Individually packed and sterile.

Order N°	Specification
72001	Single pack
72002	Bundle of 10



POLYTECH

Custom-made implants and expanders

Implants and expanders with individual specifications may be manufactured as custom-made products on demand. Manufacturing of custom-made products is upon prescription, after order confirmation.

Please follow our process for ordering a custom-made implant or expander:

REQUIRED INFORMATION:

- A moulage or the exact dimensions, shape and weight of the required product.
- Specification of the product surface (MESMO®, Microthane®, POLYtxt®, POLYsmooth™).
- Specification of the filler material (Silicone Gel or Silicone Elastomer).
- For expanders: specification of the required valve type and size (integrated magnetic valve or remote valve, Ø 11 or 17 mm).

SERVICE:

- Free moulage kit.
- Order forms listing in detail the optional product specifications.
- On demand: samples of existing implants for you to choose the desired consistency.
- Qualified assistance during the development of your custom-made implant or expander.
- Product quality in accordance with the applicable laws.

SPECIFICATIONS:

- Custom-made implants and expanders are not eligible for registration to the IMPLANTS OF EXCELLENCE Programme.

ORDER PROCESS:

- You can request a moulage kit and/or samples to define the specifications of your desired product.
- You submit an order form with all the required information.
- POLYTECH prepares an estimate of the time and cost for the manufacture of the custom-made product.
- Once you are satisfied, you confirm the order: manufacture is on demand only, upon signing of a binding order confirmation.

Manufacturers and EU Authorised Representatives

POLYTECH IMPLANTS

MANUFACTURER:

POLYTECH Health & Aesthetics GmbH
Altheimer Str. 32 / 64807 Dieburg / Germany
Tel.: +49 (0)6071 9863-0
info@polytechhealth.com
www.polytechhealth.com

POLYTECH, Mème®, Replicon®, Opticon®, POLYtxt®, MESMO®, Microthane® and Diagon\Gel® are registered trademarks of POLYTECH Health & Aesthetics GmbH, Dieburg (Germany). POLYsleeve™ and POLYsmooth™ are trademarks of POLYTECH Health & Aesthetics GmbH, Dieburg (Germany).

B-LITE® IMPLANTS MANUFACTURER:

G&G Biotechnology Ltd.
4, Ben-Gurion Str.
Haifa, 3541415
Israel
support@gg-bio.com

EUROPEAN AUTHORISED REPRESENTATIVE:

MedNet GmbH
Borkstrasse, 10
48163 Münster / Germany
Phone: +49 251 322661
ecrep@medneteuropa.com

B-Lite® lightweight breast implants are manufactured in Germany and CE approved. The products described are covered by one or more US and international patents. B-Lite® is a registered trademark of G&G Biotechnology Ltd. The Legal Manufacturer is G&G Biotechnology Ltd. © All rights reserved.

LIPOGRAFTER® MANUFACTURER:

MTF Biologics
125 May Street
Edison, NJ 08837
+1 732-661-0202
www.mtfbiologics.org

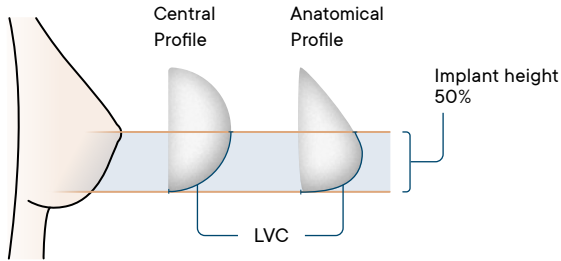
INTERNATIONAL DISTRIBUTOR:

POLYTECH Health & Aesthetics GmbH
Altheimer Str. 32
64807 Dieburg / Germany
Tel.: +49 (0)6071 9863-0
info@polytechhealth.com
www.polytechhealth.com

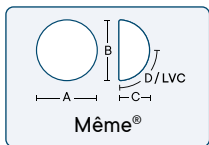
EUROPEAN AUTHORIZED REPRESENTATIVE:

EMERGO EUROPE
Prinsessegracht 20
2514 AP The Hague
The Netherlands

LipoGrafte®, KVAC® and AT-Valve® are registered trademarks of Lipocosm LLC.



Round



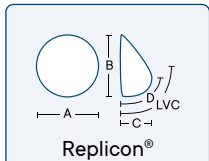
A = Width

Measurement of the major axis of the base of the implant.

B = Height

Measurement of the vertical axis of the base of the implant.

Anatomical

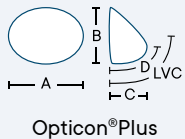


C = Projection

Measurement of the straight distance between the base of the implant and the farthest point on the front of the implant.

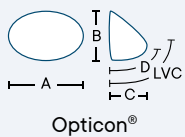
D = Curve

Distance from highest point of projection to lower implant edge.

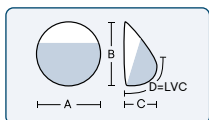


LVC = Low Ventral Curvature

The LVC value is the vertical distance on the ventral implant surface. The LVC is measured from the outermost edge of the implant base to the mid-height of the implant.



Diagon\Gel® 4Two



D = LVC

For Diagon\Gel® implants, the curve (D) and LVC are defined equally.

The LVC definition above applies.

- All our products are manufactured in Dieburg (Germany). We ship to distributors worldwide.
- POLYTECH is officially present in over 80 countries worldwide. Availability depends on factors like local registrations, import licenses and commercial agreements with our partners.
- Orders can be placed in countries managed as direct market through our direct ordering systems.
- For orders handled through our partners, please visit www.polytechhealth.com to find local contact details.
- Product supply is subject to terms and conditions, and service and delivery conditions may vary by country.
- We advise our partners to confirm the surgery date only after receiving order confirmation.

With this issue of the product catalog all previous issues become obsolete.

Source

1. Govrin-Yehudain J, Dvir H, Preise D, Govrin-Yehudain O, Govreen-Segal D. Lightweight breast implants: a novel solution for breast augmentation and reconstruction mammoplasty. *Aesthet Surg J*. 2015 Nov;35(8):965-71. doi:10.1093/asj/sjv080. Epub 2015 Sep 1. PMID: 26333989; PMCID: PMC4622048.
2. IMPLANTS OF EXCELLENCE, data on file
3. Breast Implants and Pressure (2018), G&G, Data on file.



POLYTECH Health & Aesthetics GmbH
Alzheimer Str. 32 | 64807 Dieburg | Germany

Tel.: +49 6071 9863 0
info@polytechhealth.com

